

Shock Center Protocol

Protocol: Frailty Index

Date: 2/9/17

Originator: JDN

Before Test:

- Open template:
- Save and rename file in appropriate folder
- Record room temp
- Record date
- Record last cage change
- Record Lighting level – House Lights
- Add animal ID information to Frailty Template for test
- Weigh and label mice – record weights in template file

Materials:

- Setup 2 weaning cages with no shavings – one with wire cover (Transition Cage), one without (Observation Cage)
- Setup 1 weaning cage with double shavings
- Setup 1 empty duplex with shavings and 1 wire cover

Setup:



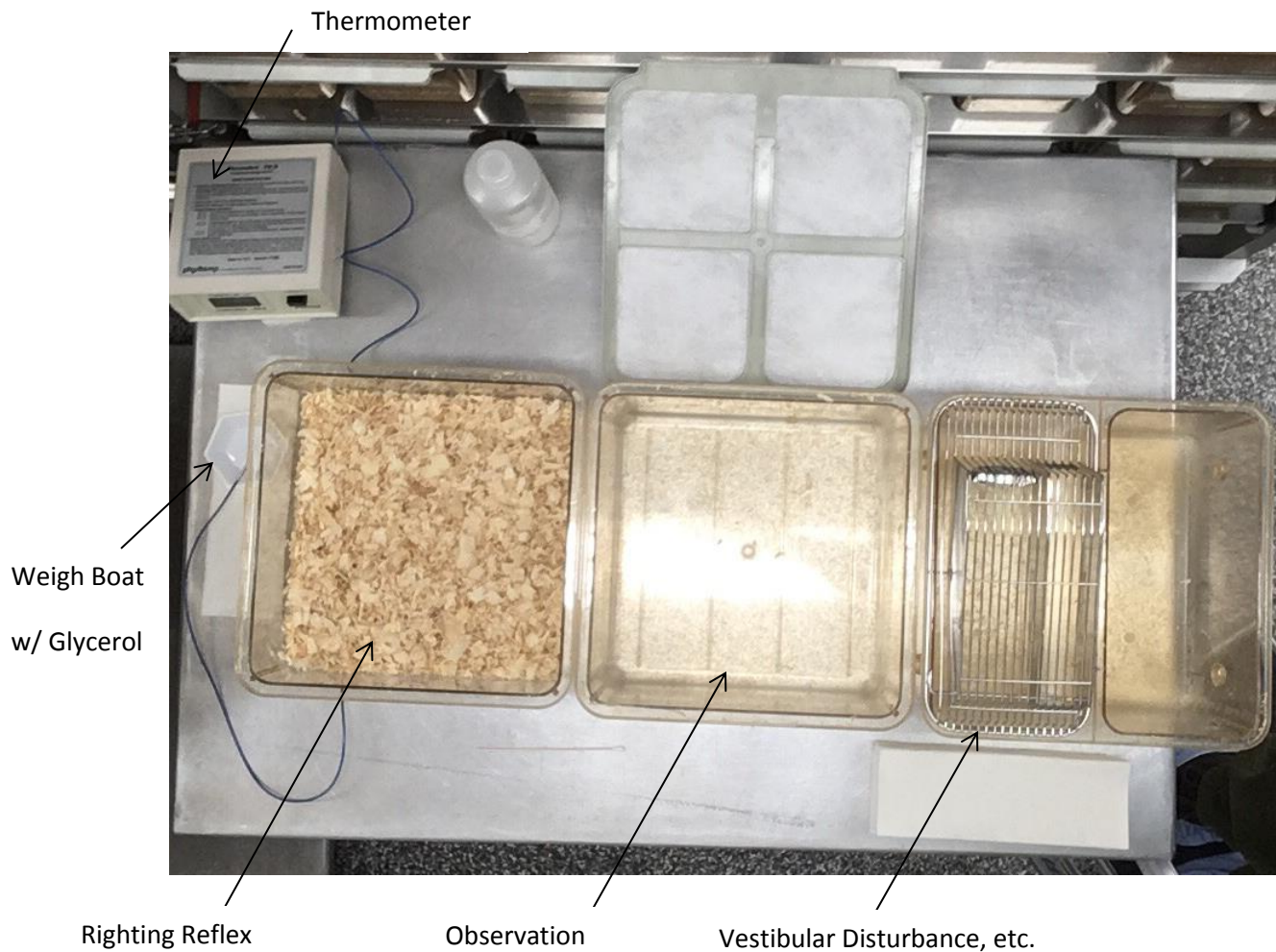
Shock Center Protocol

Protocol: Frailty Index

Date: 2/9/17

Originator: JDN

- On worktable, locate wean cage with extra shavings left (for Righting Reflex), empty wean cage center (for Gait and other “at a distance” observations), empty duplex with wire cover inverted over left pen to the right (for Vestibular Disturbance, Vision Loss, and restraint aid)



- Locate temperature meter to left of the above 3 cages
- Locate weigh boat of glycerol (to lubricate rectal probe) on paper towel near temperature meter

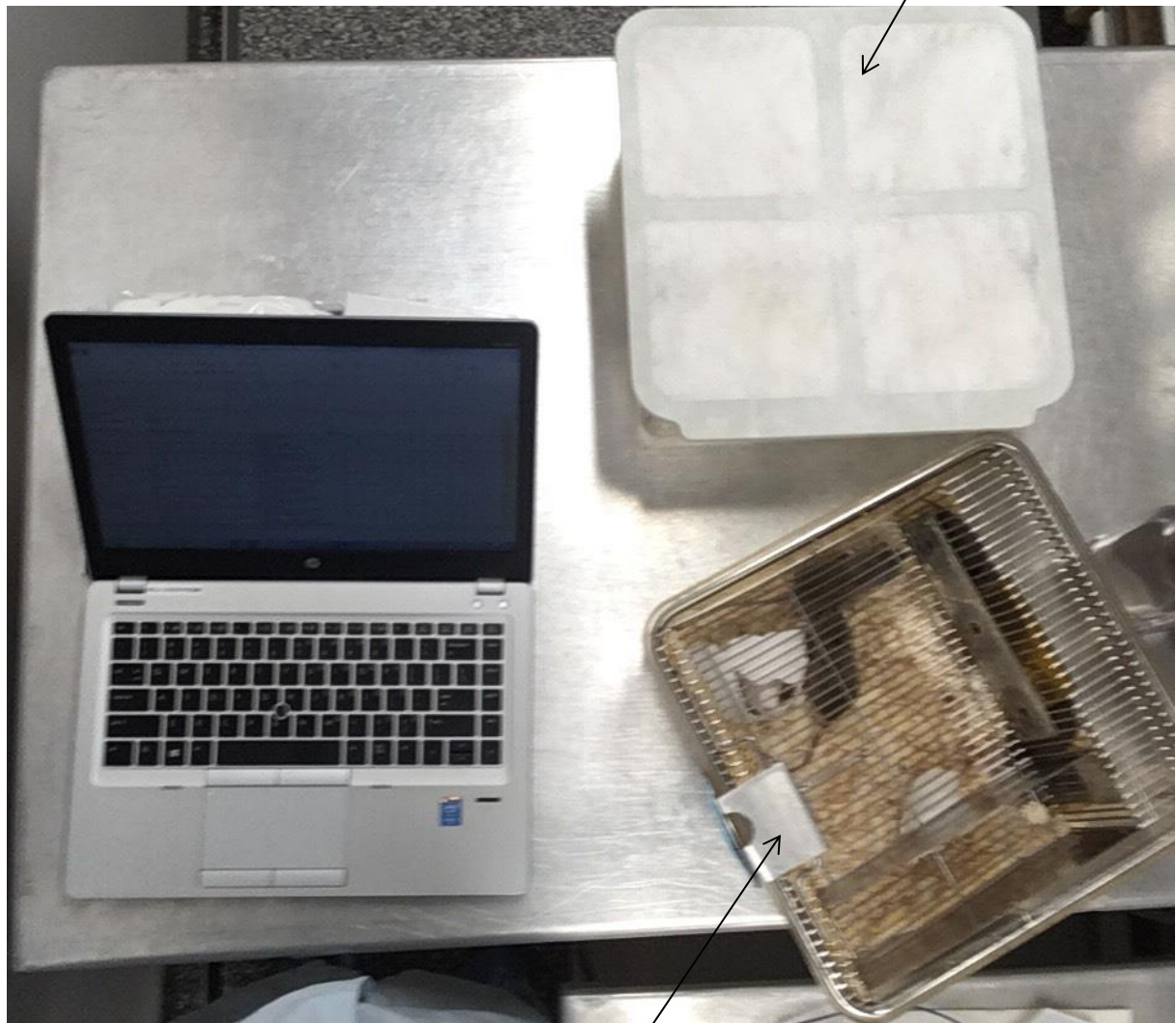
Shock Center Protocol

Protocol: Frailty Index

Date: 2/9/17

Originator: JDN

- Locate laptop on table to left of first worktable



Mice to be Tested

- Locate mice to be tested to right of laptop
- Locate Transition cage behind test mice
- Spray empty (observation) weaning cage with ethanol and wipe down

Shock Center Protocol

Protocol: Frailty Index

Date: 2/9/17

Originator: JDN

Test:

- Retrieve first mouse listed and place on forearm
- Observe mouse closely to inspect for 1st 14 Visual Evaluation criteria
- Check body condition with thumb and forefinger along hips
- Lift mouse's tail to observe for Distended Abdomen, Tumors, and Rectal or Genital Prolapses
- Lower mouse into empty weaning cage
- Immediately observe mouse's Gait. This will probably be the only opportunity for this observation. Detect any abnormalities in posture or Gait
- Observe Breathing
- Observe for Tremor
- Observe for Kyphosis
- With a cotton swab, test and observe for Menace Reflex. Note any blinking or squinting
- Remove mouse from empty weaning cage. Set mouse on or over edge of cage, grasp mouse at base of tail between fore and middle fingers, run index finger of opposite hand along the underside of mouse tail, applying slight upward pressure, from base of tail to tip, and back again. Observe for normal response of tail to curve around the finger, or for an abnormal response
- Lift mouse from empty weaning cage by tail and lower towards inverted wire cover
- Observe for abnormal body motions while mouse is suspended above wire cover
- As mouse approaches wire cover observe whether the mouse reaches to grasp the cover, and at what distance the reaching occurs
- Restrain the mouse against wire cover. Using the handle of cotton swab, observe condition of mouse's teeth
- Take rectal Temperature of mouse using glycerol as lubricant
- Restrain mouse supine (belly up) above the wean cage with extra shavings. Briskly release the mouse and retract hand from mouse
- Observe for normal righting of animal to land on feet, or an abnormal response
- After completion of assay of animal, place mouse in transition cage
- Clean rectal temp probe with ethanol, and clean empty weaning cage (observation) with ethanol twice
- Retrieve next mouse and repeat until all mice have been tested.
- Return mice to PIV
- Clean work area
- Organize data for upload